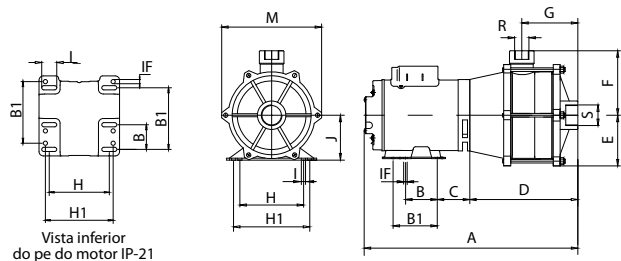
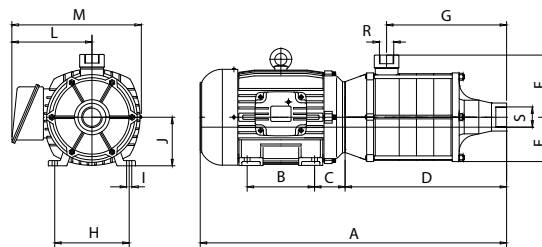


ME-2

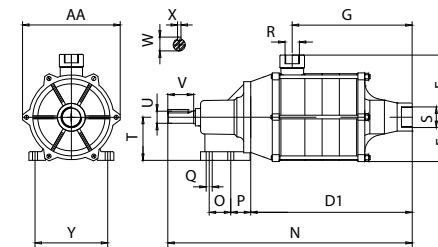
MOTOBOMBA IP-21



MOTOBOMBA IP-55



MANCALIZADA

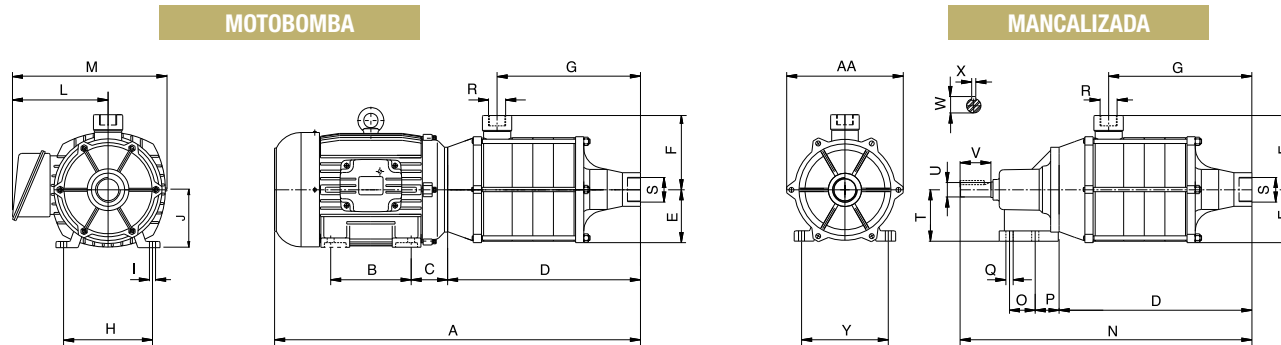


DIMENSÕES EM MILÍMETROS (mm) - 60 Hz

Descrição	ME-2230		ME-2240		ME-2250		ME-2250 V		ME-2275 V	
	3 cv		4 cv		5 cv		5 cv		7,5 cv	
Potência	3 cv		4 cv		5 cv		5 cv		7,5 cv	
Referência	Trifásico	Monofásico	Trifásico	Monofásico	Trifásico	Monofásico	Trifásico	Monofásico	Trifásico	Monofásico
A	548	544	505	588	541	588	541	588	561	653
B	76	76	125	140	140	140	140	140	140	140
B1	127	127	-	-	-	-	-	-	-	-
C	65	65	56	70	63	70	63	70	70	98
D	253	253	225	225	225	225	225	225	225	225
D1	225	225	225	225	225	225	225	225	225	225
E	105	105	105	105	105	105	105	105	105	105
F	144	144	144	144	144	144	144	144	144	144
G	128	128	128	128	128	128	128	128	128	128
H	124	124	140	190	160	190	160	190	190	216
H1	140	140	-	-	-	-	-	-	-	-
I	31	31	10	12	12	12	12	12	12	12
IF	8,7	8,7	-	-	-	-	-	-	-	-
J	89	89	90	112	100	112	100	112	112	132
L	157	83	157	199	167	199	167	199	192	199
M	235	235	268	317	278	317	278	317	298	317
N	417	417	417	417	417	417	417	417	417	417
O	62	62	62	62	62	62	62	62	62	62
P	33	33	33	33	33	33	33	33	33	33
Q	11	11	11	11	11	11	11	11	11	11
R ("BSP)	1 1/2	1 1/2	1 1/2	1 1/2	1 1/2	1 1/2	1 1/2	1 1/2	1 1/2	1 1/2
S ("BSP)	1 1/2	1 1/2	1 1/2	1 1/2	1 1/2	1 1/2	1 1/2	1 1/2	1 1/2	1 1/2
T	100	100	100	100	100	100	100	100	100	100
U	28	28	28	28	28	28	28	28	28	28
V	60	60	60	60	60	60	60	60	60	60
W	32	32	32	32	32	32	32	32	32	32
X	8	8	8	8	8	8	8	8	8	8
Y	136	136	136	136	136	136	136	136	136	136
AA	235	235	235	235	235	235	235	235	235	235
Peso Motobomba (kg)	38,9	43,1	44,3	66,1	52,9	66,3	52,8	66,1	62,1	75,8
Peso Mancalizada (kg)	28,2	28,2	28,6	28,6	28,6	28,6	28,5	28,5	28,7	28,7

Obs.: - As informações poderão sofrer alterações sem prévio aviso, de acordo com a evolução tecnológica.
 - A utilização de motores diferentes do padrão de linha alteram as características de desempenho do conjunto.
 - Imagens de caráter ilustrativo.

ME-2

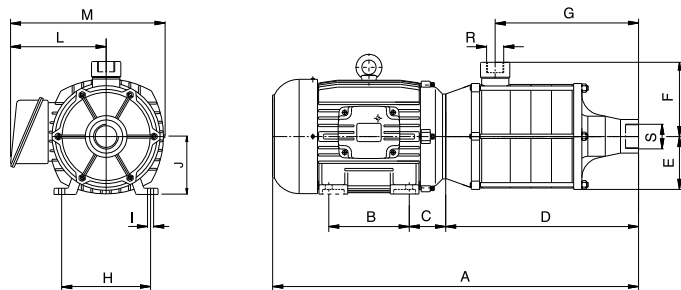


DIMENSÕES EM MILÍMETROS (mm) - 60 Hz

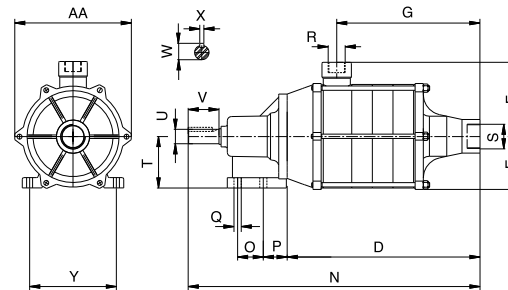
Descrição	ME-2340		ME-2350		ME-2375		ME-2375 V		ME-23100 V		ME-23125 V		ME-2450	
	4 cv		5 cv		7,5 cv		7,5 cv		10 cv		12,5 cv		5 cv	
Referência	Trif.	Mono.	Trif.	Mono.	Trif.	Mono.	Trif.	Mono.	Trif.	Mono.	Trif.	Mono.	Trif.	Mono.
A	614	697	650	697	670	762	670	762	705	744	740	744	690	737
B	125	140	140	140	140	140	140	140	140	178	178	178	140	140
C	56	70	63	70	70	98	70	98	85	89	89	85	63	70
D	334	334	334	334	334	334	334	334	334	334	334	334	374	374
E	105	105	105	105	105	105	105	105	105	105	105	105	105	105
F	144	144	144	144	144	144	144	144	144	144	144	144	144	144
G	237	237	237	237	237	237	237	237	237	237	237	237	277	277
H	140	190	160	190	190	216	190	216	216	216	216	216	160	190
I	10	12	12	12	12	12	12	12	12	12	12	12	12	12
J	90	112	100	112	112	132	112	132	132	132	132	132	100	112
L	157	199	167	199	192	199	192	199	218	207	218	205	167	199
M	268	317	278	317	298	317	342	342	342	340	342	340	278	317
N	526	526	526	526	526	526	526	526	526	526	526	526	566	566
O	62	62	62	62	62	62	62	62	62	62	62	62	62	62
P	33	33	33	33	33	33	33	33	33	33	33	33	33	33
Q	11	11	11	11	11	11	11	11	11	11	11	11	11	11
R ("BSP)	1 1/2	1 1/2	1 1/2	1 1/2	1 1/2	1 1/2	1 1/2	1 1/2	1 1/2	1 1/2	1 1/2	1 1/2	1 1/2	1 1/2
S ("BSP)	1 1/2	1 1/2	1 1/2	1 1/2	1 1/2	1 1/2	1 1/2	1 1/2	1 1/2	1 1/2	1 1/2	1 1/2	1 1/2	1 1/2
T	100	100	100	100	100	100	100	100	100	100	100	100	100	100
U	28	28	28	28	28	28	28	28	28	28	28	28	28	28
V	60	60	60	60	60	60	60	60	60	60	60	60	60	60
W	32	32	32	32	32	32	32	32	32	32	32	32	32	32
X	8	8	8	8	8	8	8	8	8	8	8	8	8	8
Y	136	136	136	136	136	136	136	136	136	136	136	136	136	136
AA	235	235	235	235	235	235	235	235	235	235	235	235	235	235
Peso Motobomba (kg)	51,0	72,8	60,1	73,5	69,4	83,1	69,1	83,1	90,6	97,3	96,3	107,1	65,3	78,7
Peso Mancalizada (kg)	35,3	35,3	35,8	35,8	35,9	35,9	35,9	35,9	36,1	36,1	36,1	36,1	41,0	41,0

Obs.: - As informações poderão sofrer alterações sem prévio aviso, de acordo com a evolução tecnológica.
 - A utilização de motores diferentes do padrão de linha alteram as características de desempenho do conjunto.
 - Imagens de caráter ilustrativo.

MOTOBOMBA



MANCALIZADA



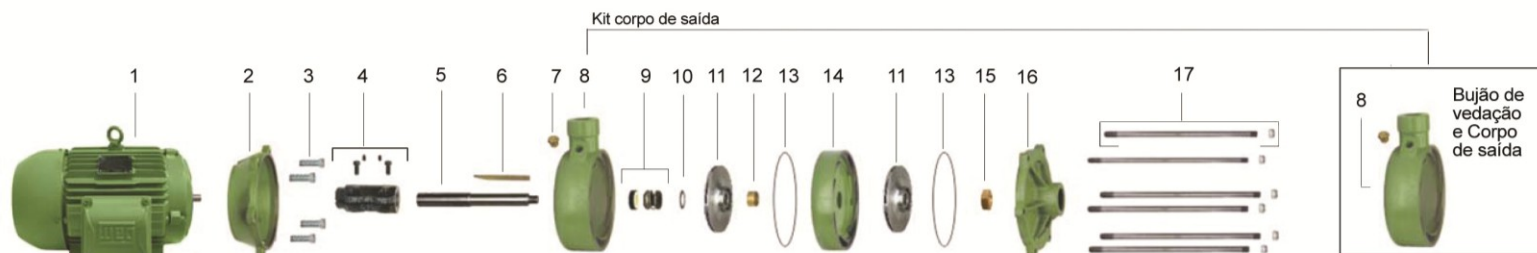
DIMENSÕES EM MILÍMETROS (mm) - 60 Hz

Descrição	ME-2475		ME-24100		ME-24100 V		ME-24125		ME-24125 V		ME-24150		ME-2575		ME-25100		ME-25150		ME-26100		ME-26150 V		ME-27100	
	7,5 cv		10 cv		10 cv		12,5 cv		12,5 cv		15 cv		7,5 cv		10 cv		15 cv		10 cv		15 cv		10 cv	
Potência	Trif.	Mono.	Trif.	Mono.	Trif.	Mono.	Trif.	Mono.	Trif.	Mono.	Trif.	Mono.	Trif.	Mono.	Trif.	Mono.	Trif.	Mono.	Trif.	Mono.	Trif.	Mono.	Trif.	Mono.
A	710	802	745	784	745	784	780	784	780	784	780	809	750	842	785	824	820	849	825	864	860	889	865	904
B	140	140	140	178	140	178	178	178	178	178	178	178	140	140	140	178	178	178	140	178	178	178	140	178
C	70	98	85	89	85	89	89	85	89	85	89	85	70	98	85	89	85	85	85	89	89	85	85	89
D	374	374	374	374	374	374	374	374	374	374	374	374	414	414	414	414	414	414	454	454	454	454	494	494
E	105	105	105	105	105	105	105	105	105	105	105	105	105	105	105	105	105	105	105	105	105	105	105	105
F	144	144	144	144	144	144	144	144	144	144	144	144	144	144	144	144	144	144	144	144	144	144	144	144
G	277	277	277	277	277	277	277	277	277	277	277	277	317	317	317	317	317	317	357	357	357	357	397	397
H	190	216	216	216	216	216	216	216	216	216	216	216	190	216	216	216	216	216	216	216	216	216	216	216
I	12	12	12	12	12	12	12	12	12	12	12	12	12	12	12	12	12	12	12	12	12	12	12	12
J	112	132	132	132	132	132	132	132	132	132	132	132	112	132	132	132	132	132	132	132	132	132	132	132
L	192	199	218	207	218	207	218	205	218	205	218	205	192	199	218	207	218	205	218	207	218	205	218	207
M	298	317	342	342	342	342	342	340	342	340	342	340	298	317	342	342	342	340	342	342	342	340	342	342
N	566	566	566	566	566	566	566	566	566	566	566	566	606	606	606	606	606	606	646	646	646	646	686	686
O	62	62	62	62	62	62	62	62	62	62	62	62	62	62	62	62	62	62	62	62	62	62	62	62
P	33	33	33	33	33	33	33	33	33	33	33	33	33	33	33	33	33	33	33	33	33	33	33	33
Q	11	11	11	11	11	11	11	11	11	11	11	11	11	11	11	11	11	11	11	11	11	11	11	11
R ("BSP)	1 1/2	1 1/2	1 1/2	1 1/2	1 1/2	1 1/2	1 1/2	1 1/2	1 1/2	1 1/2	1 1/2	1 1/2	1 1/2	1 1/2	1 1/2	1 1/2	1 1/2	1 1/2	1 1/2	1 1/2	1 1/2	1 1/2	1 1/2	1 1/2
S ("BSP)	1 1/2	1 1/2	1 1/2	1 1/2	1 1/2	1 1/2	1 1/2	1 1/2	1 1/2	1 1/2	1 1/2	1 1/2	1 1/2	1 1/2	1 1/2	1 1/2	1 1/2	1 1/2	1 1/2	1 1/2	1 1/2	1 1/2	1 1/2	1 1/2
T	100	100	100	100	100	100	100	100	100	100	100	100	100	100	100	100	100	100	100	100	100	100	100	100
U	28	28	28	28	28	28	28	28	28	28	28	28	28	28	28	28	28	28	28	28	28	28	28	28
V	60	60	60	60	60	60	60	60	60	60	60	60	60	60	60	60	60	60	60	60	60	60	60	60
W	32	32	32	32	32	32	32	32	32	32	32	32	32	32	32	32	32	32	32	32	32	32	32	32
X	8	8	8	8	8	8	8	8	8	8	8	8	8	8	8	8	8	8	8	8	8	8	8	8
Y	136	136	136	136	136	136	136	136	136	136	136	136	136	136	136	136	136	136	136	136	136	136	136	136
AA	235	235	235	235	235	235	235	235	235	235	235	235	235	235	235	235	235	235	235	235	235	235	235	235
Peso Motobomba (kg)	74,7	88,3	95,7	103	95,3	102	102	113	101	112	106	121	79,7	93,3	101	108	111	127	106	113	106	113	111	118
Peso Mancalizada (kg)	41,2	41,2	41,4	41,4	41,0	41,0	41,5	41,5	41,1	41,1	41,4	41,4	46,2	46,2	46,4	46,4	46,6	46,6	51,8	51,8	51,8	51,8	56,5	56,5

Obs.: - As informações poderão sofrer alterações sem prévio aviso, de acordo com a evolução tecnológica.
 - A utilização de motores diferentes do padrão de linha alteram as características de desempenho do conjunto.
 - Imagens de caráter ilustrativo.

Descrição dos Componentes do Produto

ME-2 (Montagem 1)



Item	Descrição	Composição do Kit	Quant. de peças utilizadas no produto	Quant. de peças contidas em cada caixa do kit	ME-2230	ME-2240	ME-2250	ME-2250 V	ME-2275 V
1	Motor elétrico, 2 Polos, 60 Hz	-	1	-	3 cv	4 cv	5 cv	5 cv	7,5 cv
*2	Intermediário	-	1	-	8701363151A	8700189151A	8700189151A	8700189151A	8700189151A
**3	Kit paraf. S.NC. 3/8" x 1 1/4"	-	4	4	8720129115A	8720129115A	8720129115A	8720129115A	8720129115A
*4	Kit acoplamento ME	Parafuso TSC.NC. 5/16" x 3/8" Parafuso TCC.NC. 5/16" x 7/8" Acoplamento	2 2 1	2 2 1	8730505101A	8730505102A	8730505102A	8730505102A	8730505102A
5	Eixo	-	1	-	8723037101A	8723037101A	8723037101A	8723037101A	8723037101A
6	Chaveta	-	1	-	8720246108A	8720246108A	8720246108A	8720246108A	8720246108A
7	Bujão de vedação 1/4" GAS	-	1	-	8720037101A	8720037101A	8720037101A	8720037101A	8720037101A
8	Kit corpo de saída ME-2	Corpo de saída Bujão de vedação 1/4" GAS	1 1	1 1	8701462151A	8701462151A	8701462151A	8701462151A	8701462151A
9	Selo mecânico 3/4" T21 BUNA Selo mecânico 3/4" T21 VITON	- -	1 1	- -	8720178101A 8720178108A	8720178101A 8720178108A	8720178101A 8720178108A	8720178101A 8720178108A	8720178101A 8720178108A
10	Arruela de encosto do rotor	-	1	-	8720021102A	8720021102A	8720021102A	8720021102A	8720021102A
***11	Rotor AL ME-2 AP-27/129mm	-	*** Est	-	8700183204A	8700183204A	-	-	-
	Rotor AL ME-2 AP-27/146mm	-	*** Est	-	-	8700183210A	8700183210A	-	-
	Rotor AL ME-2 CP-27/146mm	-	*** Est	-	-	-	-	-	8700190203A
	Roto AL ME-2 CP-27/135	-	*** Est	-	-	-	-	8700190205A	-
	Rotor BR ME-2 AP-27/129mm	-	*** Est	-	8700183315A	8700183315A	-	-	-
	Rotor BR ME-2 AP-27/146mm	-	*** Est	-	-	8700183307A	8700183307A	-	-
	Rotor BR ME-2 CP-27/135mm	-	*** Est	-	-	-	-	8700190304A	-
Rotor BR ME-2 CP-27/146mm	-	*** Est	-	-	-	-	-	8700190302A	
12	Kit bucha de distância	-	1	5	8723013103A	8723013103A	8723013103A	8723013103A	8723013103A
13	Kit o-ring 190 x 1,78 mm	-	Est	5	8720116103A	8720116103A	8720116103A	8720116103A	8720116103A
14	Divisão	-	Est -1	-	8700155101A	8700155101A	8700155101A	8700155101A	8700155101A
15	Contraporca do rotor	-	1	-	8723030102A	8723030102A	8723030102A	8723030102A	8723030102A
16	Lateral de entrada	-	1	-	8730506115A	8730506115A	8730506115A	8730506115A	8730506115A
17	Kit haste 3/8" x 140mm	Haste 3/8" x 140mm Porca NCZ. 3/8"	6 6	6 6	8723047101A	8723047101A	8723047101A	8723047101A	8723047101A
*	Kit mancal MG 100FC149	-	-	-	8730501108A	8730501109A	8730501109A	8730501109A	8730501109A
Diâmetro do rotor (mm)					129	1(146) 1(129)	146	135	146

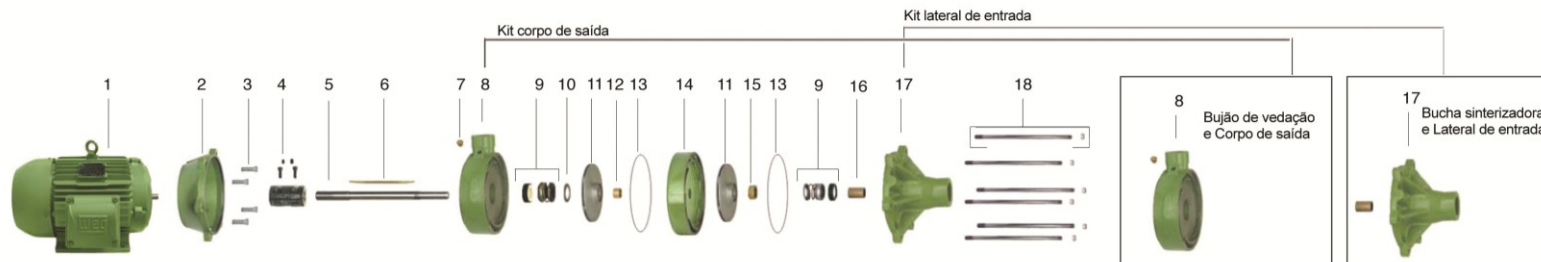
* Para bombas Mancaalizadas até 3 cv, substituir item 2 (cód. 8701363151A) pelo código 8700189151A e item 4 (código 8730505101A) pelo código 8730505103A. ** Para bombas Mancaalizadas, substituir item 3 (código 8720129115A) pelo código 8720129114A.

*** Para bombas com 2 diâmetros de rotor, considerar quantidades conforme linha "Diâmetro do rotor (mm)". Est = Número de estágios e Est -1= Número de estágios menos 1 (um). **** Possibilidade de troca apenas na versão bronze

Opções									
****g	Selo mecânico 3/4" T21 SIC-EPDM	1	1	-	8720178103A	8720178103A	8720178103A	8720178103A	8720178103A
	Selo mecânico 3/4" T21 SIC-VITON	1	1	-	8720178104A	8720178104A	8720178104A	8720178104A	8720178104A

Descrição dos Componentes do Produto

ME-2 (Montagem 2)



Item	Descrição	Composição do Kit	Quant. de peças utilizadas no produto	Quant. de peças contidas em cada caixa do kit	ME-2340	ME-2350	ME-2375	ME-2375 V	ME-23100 V	ME-23125 V	ME-2450
1	Motor elétrico IP-55, 2 Polos, 60 Hz	-	1	-	4 cv	5 cv	7,5 cv	7,5 cv	10 cv	12,5 cv	5 cv
2	Intermediário	-	1	-	8700189151A	8700189151A	8700189151A	8700189151A	8700189151A	8700189151A	8700189151A
*3	Kit paraf. S.N.C. 3/8" x 1 1/4"	-	4	4	8720129115A	8720129115A	8720129115A	8720129115A	8720129115A	8720129115A	8720129115A
4	Kit acoplamento ME	Parafuso TSC.NC. 5/16" x 3/8" Parafuso TCC.NC. 5/16" x 7/8" Acoplamento	2 2 1	2 2 1	8730505102A	8730505102A	8730505102A	8730505102A	8730505102A	8730505102A	8730505102A
5	Eixo	-	1	-	8723037104A	8723037104A	8723037104A	8723037104A	8723037104A	8723037104A	8723037106A
6	Chaveta	-	1	-	8720246109A	8720246109A	8720246109A	8720246109A	8720246109A	8720246109A	8720246110A
7	Bujão de vedação 1/4" GAS	-	1	-	8720037101A	8720037101A	8720037101A	8720037101A	8720037101A	8720037101A	8720037101A
8	Kit corpo de saída	Bujão de vedação 1/4" GAS Corpo de saída	1 1	1 1	8701462151A	8701462151A	8701462151A	8701462151A	8701462151A	8701462151A	8701462151A
9	Selo mecânico 3/4" T21 BUNA Selo mecânico 3/4" T21 VITON	- -	1 1	- -	8720178101A 8720178108A	8720178101A 8720178108A	8720178101A 8720178108A	8720178101A 8720178108A	8720178101A 8720178108A	8720178101A 8720178108A	8720178101A 8720178108A
10	Arruela de encosto do rotor	-	1	-	8720021102A	8720021102A	8720021102A	8720021102A	8720021102A	8720021102A	8720021102A
**11	Rotor AL ME-2 AP-27/129mm	-	** Est	-	8700183204A	8700183204A	-	-	-	-	-
	Rotor AL ME-2 AP-35/129mm	-	** Est	-	-	-	-	-	-	-	8700183218A
	Rotor AL ME-2 AP-27/146mm	-	** Est	-	-	8700183210A	8700183210A	-	-	-	-
	Rotor AL ME-2 CP-27/135mm	-	** Est	-	-	-	8700183210A	8700190205A	8700190205A	8700190205A	-
	Rotor AL ME-2 CP-27/146mm	-	** Est	-	-	-	-	8700190205A	8700190203A	8700190203A	-
	Rotor BR ME-2 AP-27/129mm	-	** Est	-	8700183315A	8700183315A	-	-	-	-	-
	Rotor BR ME-2 AP-35/129mm	-	** Est	-	-	-	-	-	-	-	-
	Rotor BR ME-2 AP-27/146mm	-	** Est	-	-	8700183307A	8700183307A	-	-	-	8700183327A
	Rotor BR ME-2 CP-27/135mm	-	** Est	-	-	-	8700183307A	8700190304A	8700190304A	8700190304A	-
	Rotor BR ME-2 CP-27/146mm	-	** Est	-	-	-	-	8700190304A	8700190302A	8700190302A	-
12	Kit bucha de distância	-	Est-1	5	8723013103A	8723013103A	8723013103A	8723013103A	8723013103A	8723013103A	8723013103A
13	Kit o-ring 190 x 1,78 mm	-	Est	5	8720116103A	8720116103A	8720116103A	8720116103A	8720116103A	8720116103A	8720116103A
14	Divisão	-	Est-1	-	8700155101A	8700155101A	8700155101A	8700155101A	8700155101A	8700155101A	8700155101A
15	Contraporca do rotor	-	1	-	8723031101A	8723031101A	8723031101A	8723031101A	8723031101A	8723031101A	8723031101A
9	Selo mecânico 5/8" T21 BUNA Selo mecânico 5/8" T21 VITON	- -	1 1	- -	8720173101A 8720173110A	8720173101A 8720173110A	8720173101A 8720173110A	8720173101A 8720173110A	8720173101A 8720173110A	8720173101A 8720173110A	8720173101A 8720173110A
16	Bucha sinterizada	-	1	-	8720029101A	8720029101A	8720029101A	8720029101A	8720029101A	8720029101A	8720029101A
17	Kit lateral de entrada	Bucha sinterizada Lateral de entrada	1 1	1 1	8730506105A	8730506105A	8730506105A	8730506105A	8730506105A	8730506105A	8730506105A
18	Kit haste 3/8" x 182 mm	Haste e Porca NCZ. 3/8"	6	6	8723047103A	8723047103A	8723047103A	8723047103A	8723047103A	8723047103	-
	Kit haste 3/8" x 221mm	Haste e Porca NCZ. 3/8"	6	6	-	-	-	-	-	-	8723047106A
*	Kit mancal MG 100FC149-19	-	-	-	8730501109A	8730501109A	8730501109A	8730501109A	8730501109A	8730501109A	8730501109A
Diâmetro do rotor (mm)					129	1(146) 2(129)	146	135	2(146) 1(135)	2(146) 1(135)	129

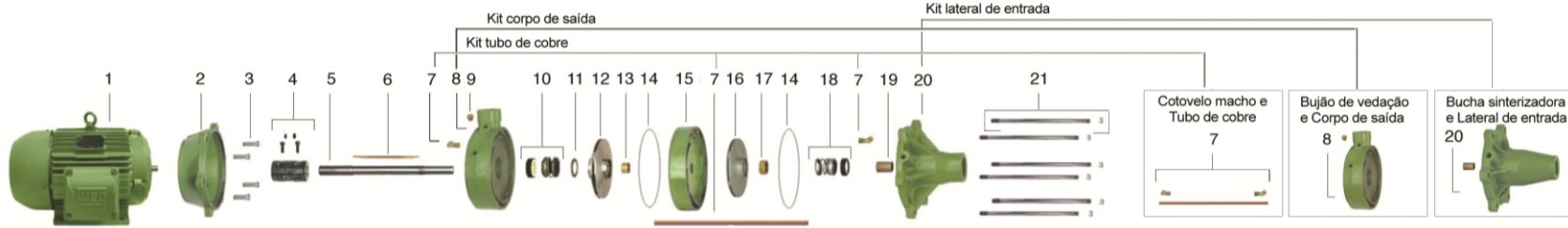
* Para bombas Mancalçadas, substituir item 3 (código 8720129115A) pelo código 8720129114A. ** Para bombas com 2 diâmetros de rotor, considerar quantidades conforme linha "Diâmetro do rotor (mm)". *** Possibilidade de troca apenas na versão bronze.

Opções

***g	Selo mecânico 3/4" T21 SIC-EPDM	-	1	-	8720178103A	8720178103A	8720178103A	8720178103A	8720178103A	8720178103A	8720178103A
	Selo mecânico 3/4" T21 SIC-VITON	-	1	-	8720178104A	8720178104A	8720178104A	8720178104A	8720178104A	8720178104A	8720178104A
	Selo mecânico 5/8" T21 SE	-	1	-	8720173104A	8720173104A	8720173104A	8720173104A	8720173104A	8720173104A	8720173104A
	Selo mecânico 5/8" T21 SIC-VITON	-	1	-	8720173106A	8720173106A	8720173106A	8720173106A	8720173106A	8720173106A	8720173106A

Descrição dos Componentes do Produto

ME-2 (Montagem 3)



Item	Descrição	Composição do Kit	Quant. de peças utilizadas no produto	Quant. de peças contidas em cada caixa do kit	ME-2475	ME-24100	ME-24100 V	ME-24125	ME-24125 V	ME-24150	ME-2575	ME-25100	ME-25150	ME-26100	ME-26150 V	ME-27100
1	Motor elétrico IP-55, 2 Polos, 60 Hz	-	1	-	7.5 cv	10 cv	10 cv	12.5 cv	12.5 cv	15 cv	7.5 cv	10 cv	15 cv	10 cv	15 cv	10 cv
2	Intermediário	-	1	-	8700189151A	8700189151A	8700189151A	8700189151A	8700189151A	8700189151A	8700189151A	8700189151A	8700189151A	8700189151A	8700189151A	8700189151A
* 3	Kit paraf. S.NC. 3/8" x 1 1/4"	-	4	4	8720129115A	8720129115A	8720129115A	8720129115A	8720129115A	8720129115A	8720129115A	8720129115A	8720129115A	8720129115A	8720129115A	8720129115A
4	Kit acoplamento 19X19	Parafuso TSC.NC. 5/16" x 3/8" Parafuso TCC.NC. 5/16" x 3/8" Acoplamento	2 2 1	2 2 1	8730505102A	8730505102A	8730505102A	8730505102A	8730505102A	8730505102A	8730505102A	8730505102A	8730505102A	8730505102A	8730505102A	8730505102A
5	Eixo	-	1	-	8723037106A	8723037106A	8723037106A	8723037106A	8723037106A	8723037106A	8723037106A	8723037106A	8723037106A	8723037106A	8723037106A	8723037111A
6	Chaveta	-	1	-	8720246110A	8720246110A	8720246110A	8720246110A	8720246110A	8720246110A	8720246111A	8720246111A	8720246111A	8720246112A	8720246112A	8720246113A
7	Kit tubo de cobre	Cotovelo macho Tubo de cobre	2 1	2 1	8730508104A	8730508104A	8730508104A	8730508104A	8730508104A	8730508104A	8730508105A	8730508105A	8730508105A	8730508106A	8730508106A	8730508107A
8	Kit corpo de saída	Cotovelo macho Bujão vedação 1/4" Corpo de saída	1 1 1	1 1 1	8701463152A	8701463152A	8701463152A	8701463152A	8701463152A	8701463152A	8701463152A	8701463152A	8701463152A	8701463152A	8701463152A	8701463152A
9	Bujão vedação 1/4"	-	1	-	8720037101A	8720037101A	8720037101A	8720037101A	8720037101A	8720037101A	8720037101A	8720037101A	8720037101A	8720037101A	8720037101A	8720037101A
10	Selo mecânico 3/4" T21 BUNA	-	1	-	8720178101A	8720178101A	8720178101A	8720178101A	8720178101A	8720178101A	8720178101A	8720178101A	8720178101A	8720178101A	8720178101A	8720178101A
10	Selo mecânico 3/4" T21 VITON	-	1	-	8720178108A	8720178108A	8720178108A	8720178108A	8720178108A	8720178108A	8720178108A	8720178108A	8720178108A	8720178108A	8720178108A	8720178108A
11	Arnuela de encosto do rotor	-	1	-	8720021102A	8720021102A	8720021102A	8720021102A	8720021102A	8720021102A	8720021102A	8720021102A	8720021102A	8720021102A	8720021102A	8720021102A
12	Rotor AL ME-2 CC AP-27/146mm	-	1	-	8700184207A	8700184207A	8700191205A	-	-	-	-	-	-	-	-	8700184207A
12	Rotor AL ME-2 CC CP-27/135mm	-	1	-	-	-	-	-	-	-	-	-	-	-	-	-
12	Rotor AL ME-2 CC CP-27/146mm	-	1	-	-	-	-	-	-	-	-	-	-	-	-	-
12	Rotor AL ME-2 CC AP-35/146mm	-	1	-	-	-	-	-	-	-	-	-	-	-	-	-
12	Rotor BR ME-2 CC AP-27/146mm	-	1	-	8700184304A	8700184304A	-	-	-	-	-	-	-	-	-	-
12	Rotor BR ME-2 CC CP-27/135mm	-	1	-	-	-	-	-	-	-	-	-	-	-	-	-
12	Rotor BR ME-2 CC CP-27/146mm	-	1	-	-	-	-	-	-	-	-	-	-	-	-	-
12	Rotor BR ME-2 CC AP-35/146mm	-	1	-	-	-	8700191304A	-	-	-	-	-	-	-	-	8700191304A
13	Kit bucha de distância	-	Est-1	5	8723013103A	8723013103A	8723013103A	8723013103A	8723013103A	8723013103A	8723013103A	8723013103A	8723013103A	8723013103A	8723013103A	8723013103A
14	Kit o-ring 190x1,78mm	-	Est	5	8720116103A	8720116103A	8720116103A	8720116103A	8720116103A	8720116103A	8720116103A	8720116103A	8720116103A	8720116103A	8720116103A	8720116103A
15	Divisão	-	Est-1	-	8700155101A	8700155101A	8700155101A	8700155101A	8700155101A	8700155101A	8700155101A	8700155101A	8700155101A	8700155101A	8700155101A	8700155101A
**16	Rotor AL ME-2 AP-27/129mm	-	-	-	8700183204A	-	-	-	-	-	-	-	-	-	-	8700183204A
**16	Rotor AL ME-2 AP-27/146mm	-	-	-	8700183210A	8700183210A	-	-	-	-	-	-	-	-	-	8700183210A
**16	Rotor AL ME-2 AP-35/129mm	-	-	-	-	-	-	-	-	-	-	-	-	-	-	-
**16	Rotor AL ME-2 AP-35/146mm	-	**Est.	-	-	-	-	-	-	-	8700183218A	-	-	-	-	-
**16	Rotor AL ME-2 CP-27/130mm	-	-	-	-	-	-	-	-	-	8700183219A	-	-	8700183219A	-	-
**16	Rotor AL ME-2 CP-27/135mm	-	-	-	-	-	8700190205A	-	8700190205A	8700190205A	-	-	-	-	-	8700190205A
**16	Rotor AL ME-2 CP-27/146mm	-	-	-	-	-	-	8700190203A	-	8700190203A	-	-	-	-	-	-
**16	Rotor BR ME-2 AP-27/129mm	-	-	-	-	-	-	-	-	-	-	-	-	-	-	-
**16	Rotor BR ME-2 AP-27/146mm	-	-	-	8700183315A	8700183307A	-	-	-	-	-	8700183315A	-	-	-	8700183315A
**16	Rotor BR ME-2 CP-27/130mm	-	-	-	-	-	-	-	-	-	-	8700183307A	-	-	-	8700183307A
**16	Rotor BR ME-2 CP-27/135mm	-	-	-	-	-	-	-	-	-	-	-	-	-	-	-
**16	Rotor BR ME-2 CP-27/146mm	-	**Est	-	-	-	8700190304A	-	8700190304A	8700190304A	-	-	-	-	-	8700190304A
**16	Rotor BR ME-2 AP-35/129mm	-	-	-	-	-	-	8700190302A	-	8700190302A	-	-	-	-	-	-
**16	Rotor BR ME-2 AP-35/146mm	-	-	-	-	-	-	-	-	-	8700183327A	-	-	-	-	-
17	Contraporca do rotor	-	1	-	8723031101A	8723031101A	8723031101A	8723031101A	8723031101A	8723031101A	8723031101A	8723031101A	8723031101A	8723031101A	8723031101A	8723031101A
18	Selo mecânico 5/8" T21 BUNA	-	1	-	8720173101A	8720173101A	8720173101A	8720173101A	8720173101A	8720173101A	8720173101A	8720173101A	8720173101A	8720173101A	8720173101A	8720173101A
18	Selo mecânico 5/8" T21 VITON	-	1	-	8720173110A	8720173110A	8720173110A	8720173110A	8720173110A	8720173110A	8720173110A	8720173110A	8720173110A	8720173110A	8720173110A	8720173110A
19	Bucha sinterizada	-	1	-	8720029101A	8720029101A	8720029101A	8720029101A	8720029101A	8720029101A	8720029101A	8720029101A	8720029101A	8720029101A	8720029101A	8720029101A
20	Kit lateral de entrada	Bucha sinterizada Lateral de entrada	1 1	1 1	8730506107A	8730506107A	8730506107A	8730506107A	8730506107A	8730506107A	8730506107A	8730506107A	8730506107A	8730506107A	8730506107A	8730506107A
21	Kit haste 3/8"x221mm	-	6	6	8723047106A	8723047106A	8723047106A	8723047106A	8723047106A	8723047106A	-	-	-	-	-	-
21	Kit haste 3/8"x261mm	-	-	-	-	-	-	-	-	-	8723047110A	-	-	-	-	-
21	Kit haste 3/8"x302mm	-	-	-	-	-	-	-	-	-	-	8723047110A	-	-	-	-
21	Kit haste 3/8"x341mm	-	-	-	-	-	-	-	-	-	-	-	8723047110A	-	-	-
*	Kit mancal MG 100FC149-19	-	-	-	8730501109A	8730501109A	8730501109A	8730501109A	8730501109A	8730501109A	8730501109A	8730501109A	8730501109A	8730501109A	8730501109A	8730501109A
					3(146) 1(129)	146	135	146	1(146) 3(135)	3(146) 1(135)	3(146) 2(129)	4(146) 1(129)	146	146	2(135) 4(130)	3(146) 4(129)
* Para bombas Mancalizadas, substituir item 3 (código 8720129115A) pelo código 8720129114A. ** Para bombas com 2 diâmetros de rotores diferentes, considerar quantidades conforme linha "Diâmetro do rotor (mm)" considerando 1 (um) rotor CC. Est = Número de estágios e Est-1= Número de estágios menos 1 (um).																
Opções																
10	Selo mecânico 3/4" T21 SIC-EPDM	-	1	-	8720178103A	8720178103A	8720178103A	8720178103A	8720178103A	8720178103A	8720178103A	8720178103A	8720178103A	8720178103A	8720178103A	8720178103A
10	Selo mecânico 3/4" T21 SIC-VITON	-	1	-	8720178104A	8720178104A	8720178104A	8720178104A	8720178104A	8720178104A	8720178104A	8720178104A	8720178104A	8720178104A	8720178104A	8720178104A
18	Selo mecânico 5/8" T21 SIC-BUNA	-	1	-	8720173103A	8720173103A	8720173103A	8720173103A	8720173103A	8720173103A	8720173103A	8720173103A	8720173103A	8720173103A	8720173103A	8720173103A
18	Selo mecânico 5/8" T21 SE	-	1	-	8720173104A	8720173104A	8720173104A	8720173104A	8720173104A	8720173104A	8720173104A	8720173104A	8720173104A	8720173104A	8720173104A	8720173104A
18	Selo mecânico 5/8" T21 SIC-VITON	-	1	-	8720173106A	8720173106A	8720173106A	8720173106A	8720173106A	8720173106A	8720173106A	8720173106A	8720173106A	8720173106A	8720173106A	8720173106A